

MANUAL INTERMEDIATE PROOFER



PAGE



Mini PAGE

STANDARD

- **Small size for maximum capacity:** optimization of space in your bakery.
- **Work carried out at an ergonomic height:**
 - Height of the moulding table: 93 cm
 - Height of the rounding table: 83 cm
- **Structure made of 20/10th double-thickness steel sheet on the sides:** optimum shock resistance and rigidity.
- **Inside of sides with flat surface:** no retention of flour dust.
- **Advancement of the swing frames by push buttons:**
 - Very simple to use and ergonomic
 - Allows continuous loading of the moulder
- **Swing frames removable with screwed axles:** each frame can be removed independently at the loading area without moving the dough proofer.
- **Mechanical safety by rupture screw:** guarantees the mechanical protection of the machine.
- **Nyltex pockets double thickness without velcro:** super resistant pockets in a fabric that holds little humidity and with no bacteria area.
- **Casing to plug in moulder and divider:** to power the associated machines.
- **If failure of the system, possibility to use backup system:** allows emptying the proofer in the event of a power cut.
- **Electric casing separate from motor unit:** allows access to the mechanical areas without electric shock risk for users.
- **Machine on 4 wheels including 2 with breaks:** easy to move thanks to polyamide wheels Ø80.
- **Rubber bumpers** at the rear for protection against impacts with the wall.

BRONZE

- **Hygiene kit (UV lamps + air extractor):**
 - UV lamp with germicidal action with automatic timer
 - Air extractor for drying gutters
- **GoFirst (Choice and Search of 1st frame):** allows you to define at any time a control swing from among all those on the dough proofer, and to program an automatic return to this swing, without a long button press.

SILVER

- **Felt-covered rounding table:** reinforced structure, can be handled with one hand. Maximum load allowed: 20kg.

GOLD

- **Pedal with impulse:** allows moving the swings with the foot. Both hands remain free to work.

	STANDARD	BRONZE	SILVER	GOLD
Hygiene kit		✓	✓	✓
GoFirst		✓	✓	✓
Rounding table			✓	✓
Pedal with impulse				✓

OPTIONS

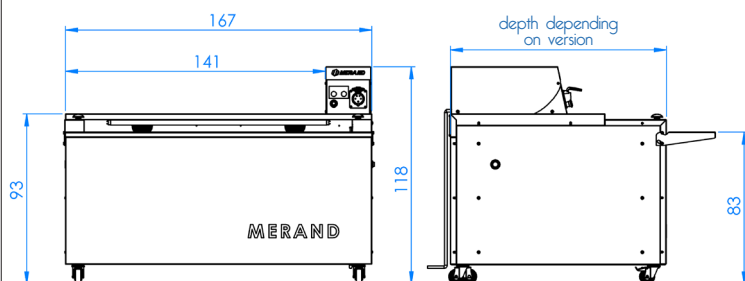
- **Two sensitive buttons:** replace push buttons and offer comfort of use. Less risk of impact than a button.
- **Synthetic felt gutters:** possibility of replacing Nyltex with the felt.
- **Delivery of assembled dough proofer:** to save time during installation when accessibility allows it.
- **Electrical change** if other than 380V/50Hz.

CAPACITIES / DIMENSIONS

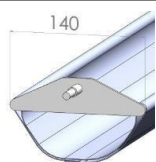
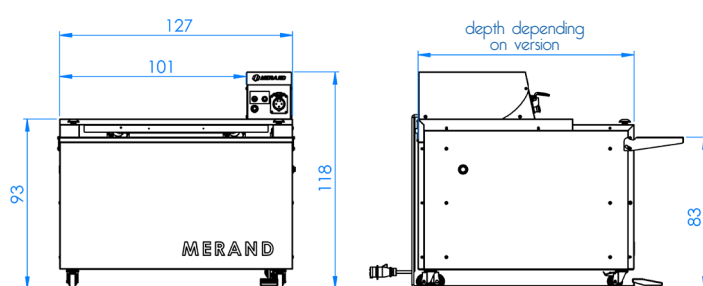
Model	Number of swings	Frame width (cm)	Capacity baguettes 320g*	Capacity bread 550g*	Capacity bread 900g*	Depth (cm)	Width (cm)
PAGE-33/140	33	14	330	264	-	118	167
PAGE-26/170	26	17	260	208	182	118	167
PAGE-40/140	40	14	400	320	-	137	167
PAGE-32/170	32	17	320	256	224	137	167
MINI PAGE 26 / 140	26	14	208	156	-	98	127
MINI PAGE 20 / 170	20	17	160	120	100	98	127
MINI PAGE 33 / 140	33	14	264	198	-	118	127
MINI PAGE 26 / 170	26	17	208	156	130	118	127

(*): Information given for information purposes only and may vary depending on the nature of the dough.

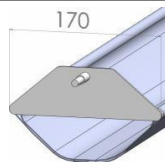
PAGE



MINI PAGE



Swing tray width 14cm
recommended for baguettes
and breads up to 550g



Swing tray width 17cm
recommended for baguettes
and breads up to 1kg

WEIGH / PACKING LIST

Model	Tare weight (kg)	Crate of disassembled proofer	Crate of assembled proofer	
			Depth (cm)	Width (cm)
PAGE-33/140	300	Weight: 45kg Width/Depth/ Height: 124/84/189cm	128	184
PAGE-26/170	283		128	184
PAGE-40/140	333		147	184
PAGE-32/170	315		147	184
MINI PAGE 26 / 140	240		108	144
MINI PAGE 20 / 170	230		108	144
MINI PAGE 33 / 140	270		128	144
MINI PAGE 26 / 170	257		128	144

ELECTRICAL FEATURES

400 Volts / 50 Hz / 0,25 Kw / 0,9 A
 400 Volts / 60 Hz / 0,24 Kw / 0,85 A
 230 Volts / 50 Hz / 0,25 Kw / 1,56 A
 230 Volts / 60 Hz / 0,24 Kw / 1,47 A
 Electricity supply: 5 m cable with male plug TRI + T + N

HYGIENE / SECURITY

The manual proofers comply with:

- Machine directive 2006/42/CE
- French work code

Z.I. de la Turbanière
BRECE • 35530 • FRANCE

+33 (0)2 99 04 15 30 - salesdpt@merand.fr - www.merand.fr/en/